

REGISTRATION

Registration for students entering 1ST through 6TH grades for the 2009-2010 school year begins in April, 2009. Please register at the Wickliffe Recreation Department, Wickliffe City Hall, 28730 Ridge Road, (1st floor, rear, east side of the building). Registration hours are Monday through Friday, 9:00 A.M. to 12 P.M. and 1:00 P.M. to 4:00 P.M.

CAMP FEES

Attendance options are available for Wickliffe residents and non-residents. For Wickliffe residents, the fee is \$85 per week for the first child and \$55 per week for each additional child in the family. For non-residents, the fee is \$130 each week per child.

The weekly attendance options will consist of a full week or the two day option (excluding field trip days). See the Summer Day Camp Application or the Wickliffe Recreation Department for details.

PLEASE NOTE: Registration and payment must be made in advance of starting date and before each week begins. Payments are to be made at the Recreation Department. Mail-in payments will be accepted with completed applications.

EXTENDED DAY SERVICES

For drop-off between 7:30 A.M. and 8:00 A.M., an additional \$5 per child per day will be required. For pick-up between 5:00 P.M. and 5:30 P.M., an additional \$5 per child per day will also be required. This fee should be paid in advance of the weeks that the service will be used.

CAMP PERSONNEL

The camp director, Michelle Jones, is a graduate of Walsh University with a Bachelor's degree in Education. This will be her tenth year as camp director and thirteenth year as a camp counselor. Michelle is a certified teacher and coach. She is trained in CPR and First Aide. Michelle is looking forward to another fun-filled and adventurous summer with an enthusiastic staff and many creative and energetic campers.

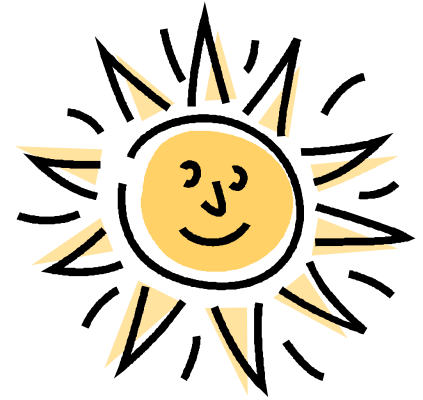
The camp personnel consists of college and high school students. The counselors have experience in working with children and are CPR trained. The returning counselors have at least two years of experience. This will insure quality care and supervision for the children.



WICKLIFFE RECREATION
DEPARTMENT
28730 RIDGE ROAD
WICKLIFFE, OHIO 44092
(440) 943-7120

Wickliffe Recreation
Department

Summer
Day Camp
2009



For children entering
1ST though 6TH grade
for the 2009-2010 school year

Summer Day Camp is held
at Coulby Park

Monday through Friday
June 15TH - August 7TH
8:00 A.M. – 5:00 P.M.

Timothy E. Stopp
Recreation Director

CAMP SITE

Coulby Park is located at 28730 Ridge Road. This is a beautiful and well-maintained park that offers the children a variety of recreational activities. Day Camp is centered around the pavilion near the pond.

WHAT TO BRING TO CAMP

- Lunch in a cooler
- Extra beverage
- Appropriate weather attire
- Snack or snack \$ in a change purse
- Swimming suit and a towel in a backpack

Wickliffe Recreation Department is not responsible for lost articles or money brought to camp.

WEEKLY SCHEDULE

A weekly schedule will be sent home on Monday afternoons. It will include the activities and plans for the week.

FIELD TRIPS

Field trip notices will also be sent home on Monday afternoons. *The money for the field trip is due the morning of the trip in cash (checks not accepted).* The parents will sign the permission slip for all field trips at the time of registration. Transportation and supervision will be provided for all trips.

DAY CAMP CONNECTION

This newsletter is an important line of communication between the counselors, campers and the parents. The *Day Camp Connection* will be sent home every Friday afternoon. It includes highlights from the current week, campers of the week and upcoming events for the next week.

POOL PASSES

All campers must purchase a pool pass prior to the first day of camp. DO NOT send the pool pass to camp with your camper. We will verify pool pass purchase with pool rosters. Please see the Recreation Department's Spring-Summer Booklet in the Wickliffe Connection for details and fees. Pool pass sales begin in May. Non-residents, please contact the Recreation Department for details on a Summer Day Camp Pool Pass.



SWIMMING LESSONS

Campers that are Wickliffe residents can register for swimming lessons held at the Outdoor Family Aquatic Center at 11:00 A.M. ONLY. The campers will be dropped off and picked up by the counselors each day for lessons. Please see the Recreation Department's Spring/Summer Booklet in the Wickliffe Connection.

TRANSPORTATION

Parents are to provide transportation for the campers to and from this program. Parents are to walk to the pavilion to pick up the campers at the end of each day. Children must be picked up on time. See Extended Day Services for additional hours and fees.



RECREATIONAL GAMES

Basketball	Kickball
Volleyball	Soccer
Golden Glove	Dodge Ball
Baseball	Softball
Capture the Flag	Tennis



RECREATIONAL ACTIVITIES

Bocce Ball	Fishing
Team Contests	Playground
Nature Walks	Swimming
Adventure Mystery Games	

SPECIAL EVENTS

Guest Speakers	Talent Show
Cookout	Pizza Parties
Field Trips	Field Day

ARTS AND CRAFTS

Weekly activities will be provided for campers that are interested in expressing their creative abilities.

INCLEMENT WEATHER POLICY

If the weather is poor, (rain, thunder, lightning, etc.) at 7:30 a.m., camp will be held at the Recreation Hall for the duration of the inclement weather. The Recreation Hall is located above the traffic garage within the Service Department (the old fire station). In the case of severe weather, camp would be canceled at the discretion of the Recreation Director.